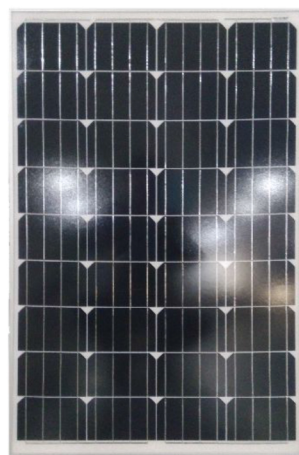




YL100C-18b

YL105C-18b

YL110C-18b



## Warranty

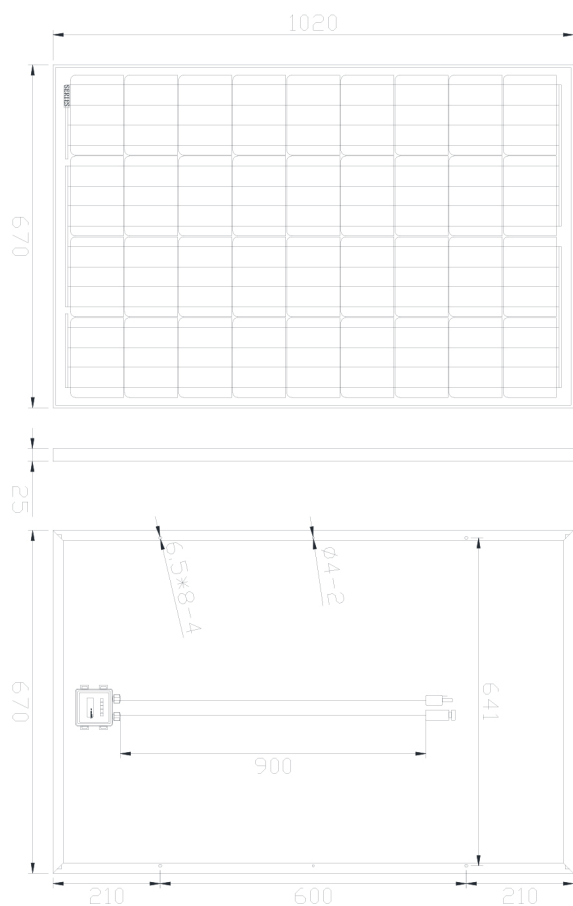
5-year repair and workmanship warranty

12-year warranty at 90% power output

25-year warranty at 80% power output

Typical Electrical			
Models	YL100C-18b	YL105C-18b	YL110C-18b
Power Tolerance (%)	±3	±3	±3
Max. Power (P <sub>max</sub> ) (W)	100	105	110
Optimum Operating Voltage	18.18	18.50	18.79
Optimum Operating Current	5.50	5.68	5.85
Open-circuit Voltage (V <sub>oc</sub> /V)	22.61	22.86	23.07
Short-circuit Current (I <sub>sc</sub> /A)	5.97	6.04	6.19
Cells efficiency (%)	18.0	18.6	19.4

Note: the specifications are obtained under the Standard Test Condition (STC): 1,000W/m<sup>2</sup>, Am 1.5, Cell Temperature 25°C



## Mechanical Characteristics

Solar cell (mm)	Mono 156×104
No.of Cell and Connections	36 (4×9)
Dimension (L×W×H) (mm)	1020×670×25
Weight (kg)	8 (approx)
Junction Box / Cable (mm)	IP65 / 900
Connector	MC4 Compatible
Packaging Configuration	2pcs/cnt
Load Capacity	1500pcs/ 40'GP

## Working Conditions

Maximum System Voltage	DC 1000V (IEC)
Temperature cycling range	-40°C ~ +85°C
NOTC	47°C
Maximum Series Fuse	15 A
Application Class	Class A
Temperature coefficients of I <sub>sc</sub>	(+0.06%/°C)
Temperature coefficients of V <sub>oc</sub>	(-0.35%/°C)
Temperature coefficients of P <sub>max</sub>	(-0.4%/°C)